

# TexasArchitect

NOVEMBER/DECEMBER 2009





# Tsa STUDIO AWARDS 09

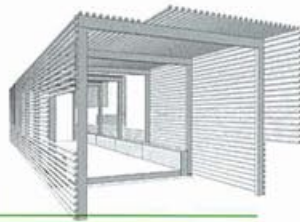
light volumetric flow strong clarity organization  
 responsive landscape surprise detail crafted  
 gracious space blending configuration fresh well  
 crafted activates street refreshing simple beautiful  
 elegant usable maximize use street presence  
 urban interface life place neighborhood  
 playful color texture ring adaptive culture

pur, ancy  
 return interior  
 detail ended  
 elegant sea rained  
 grace design details  
 imaginative functional  
 exploration personality  
 bold discrete skillful  
 environment space art  
 sight efficient richness  
 clarity urban sculptural  
 mature modern historic  
 proportion respect idea  
 powerful user amplified  
 strength essence vitality

SINCE 2004, THE TEXAS SOCIETY OF ARCHITECTS has sponsored the TSA Studio Awards to recognize the best in unbuilt work by architectural students and faculty, as well as by architects practicing in the state. Prior to this year, submittals were reviewed by the same jurors who judged the TSA Design Awards. This year, a separate jury was selected for the Studio Awards program. The jury met July 22 in the offices of Hariri and Hariri Architecture in New York City. Jurors were Gisue Hariri, a partner in the host firm, and Marc Tsurumaki, AIA, a partner in Lewis. Tsurumaki. Lewis Architects. (A third juror canceled unexpectedly just prior to the event.) *TA* Editor Stephen Sharpe facilitated the jury's viewing of the 109 entries.

The jury awarded eight projects. Each are profiled below and on following pages. The descriptions were adapted from narratives provided by the designers of the award-winning projects.

Jurors noted that some entries demonstrated how sustainable design strategies were used to generate architectural solutions. Tsurumaki was encouraged "that it is seen as a prerequisite, just like structural and mechanical," even in low-tech projects. Hariri was equally encouraged by how a few entries illustrated thoughtful integration of sustainable design, although she noted that "sustainability by itself is not enough." □



BRAVE/ARCHITECTURE

## Sorensen Bridge

Where the historical covered bridge protected the structure from the elements, this reinterpretation permits the elements to pass through the structure. Located in the Texas Hill Country, the Sorensen Bridge is the addition of a structure to an existing bridge spanning 50 feet across Sandy Creek near New Ulm. The creek divides 220 acres of private property that belongs to an entrepreneur whose business is selling tube steel.

The project brief called for the transformation of an existing concrete and steel structure into a covered bridge. The architects found two factors that informed the solution. First, traditional covered bridges were built to protect the wooden structures from the elements. Second, the creek has flooded over the bridge three times in the last five years. The architects concluded that the most relevant solution would be to create a permeable cover that allows for the incursion of floodwaters. The final bridge will be clad in recycled tube steel mounted on a steel skeleton that will allow water to continue passing over and through the bridge during moments of extreme flooding. □

