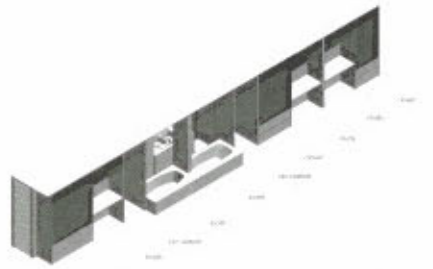
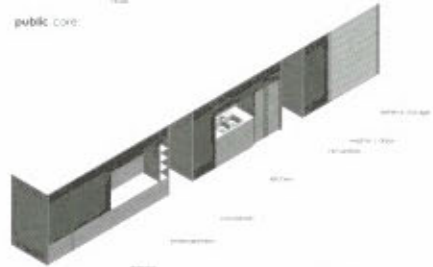




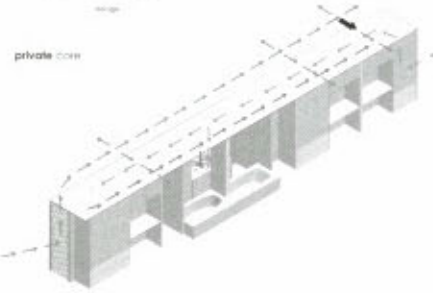
**HOUSE  
COMPETITION**



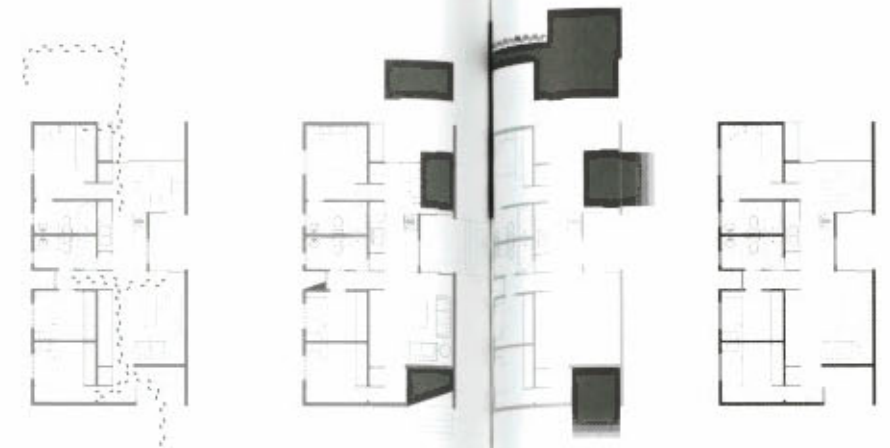
public core



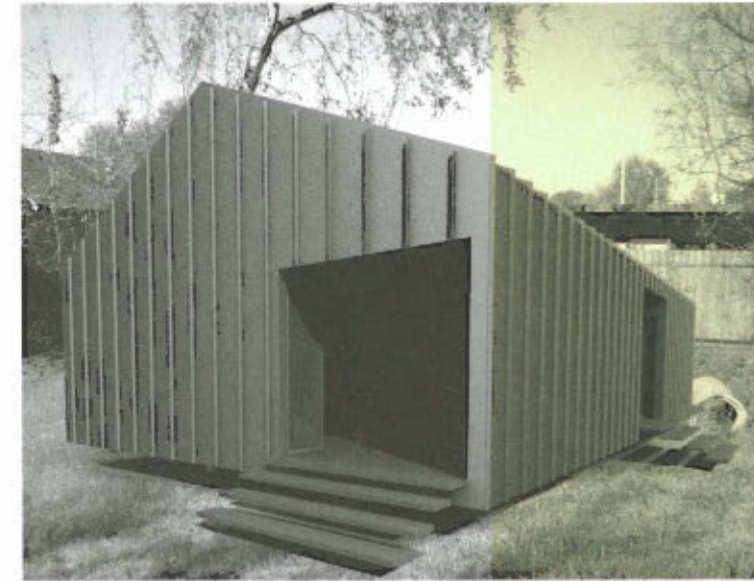
private core



Mechanical Diagram  
cold water  
hot water  
hvac



A central core organizes the house, separating public and private areas.



**Brave/Architecture**  
Houston, Texas

99 0109

The CLAD (Custom Livable Affordable Dwelling) is engineered for a minimal footprint. This entails not only how the house sits upon the earth, but the construction impact as well. SIP panels were used for the wall and roof assembly, minimizing the time needed to create the building envelope. A minimal pier-and-beam foundation touches the ground lightly. The 880 SF (1,084 SF with decks), 3-bedroom, 2-bath plan is determined by this small footprint. A central core organizes the house, separating public and private areas. Within this organizational block, entertainment space is efficiently planned with work surfaces, storage areas, and mechanical equipment. Only one line of mechanical ductwork is required to service the entire house. A vaulted ceiling adds proportion to the larger public areas, while a finished ceiling in the private areas provides cover for an attic space that augments storage capacity.